

MetaTrader 5 EEZEORDER 2.10 Usage Guide

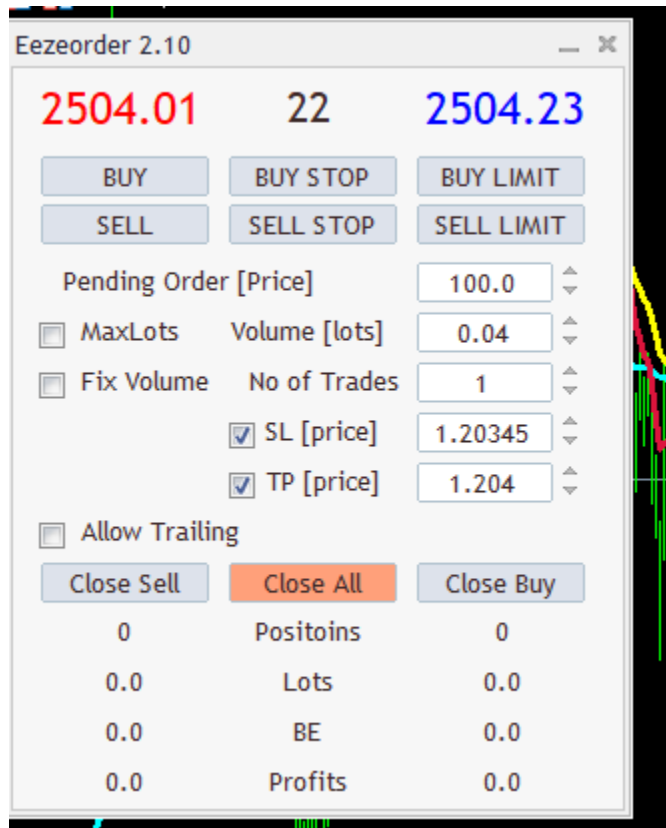


Table of Contents

1. Introduction
2. Installation
3. Configuration
4. Features
5. Operation
6. Best Practices
7. Troubleshooting
8. FAQs
9. Contact & Support

1. Introduction

Overview

The Eeezeorder 2.10 EA is a Trade Utility/EA that helps with trade management, particularly multiple trades. With it you can open, manage and close positions on any pair on the MT5 platform.

Example:

This guide covers the usage of the " Eeezeorder 2.10" utility for MetaTrader 5, developed by "The Complete Trader". This utility is designed to help traders automate boring, repetitive, time consuming trading tasks(Especially that the market is quite volatile). This helps in risk management.

Key Benefits

- **Automation:** Streamline trading tasks with automated processes.
- **Efficiency:** Improve split second decision-making benefits.
- **Flexibility:** Customize settings to fit your specific trading strategy.

2. Installation

Requirements

- MetaTrader 5 platform installed.
- Supported operating systems (e.g., Windows 10, macOS*).
- With MacOS, the installation process is not easy and requires remote desktop access(You could however use a virtual machine).
- Operating system: Microsoft Windows 98 SE2 or higher.
Processor: Intel Celeron-based processor, with a frequency of 1.7 GHz or higher.
RAM: 256 Mb of RAM or more.
Storage: 50 Mb of free drive space..

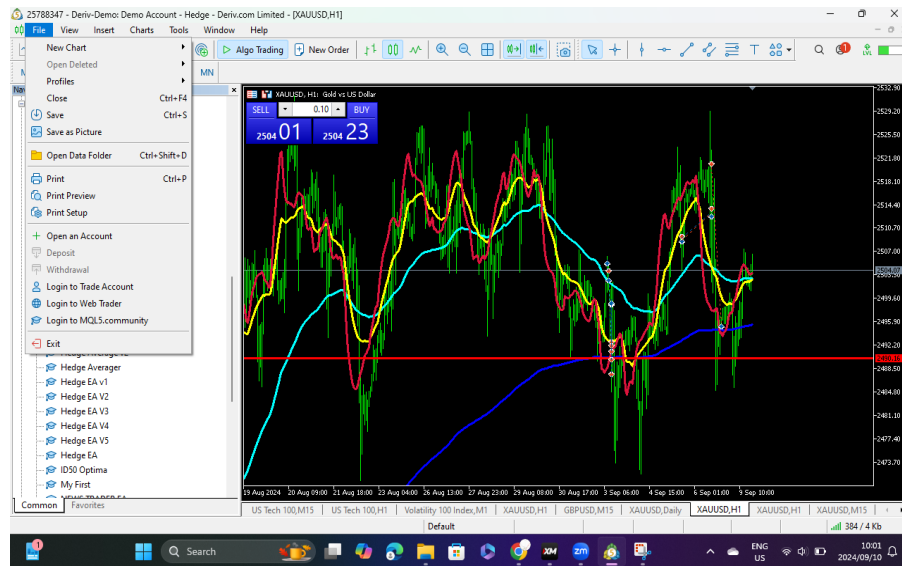
Installation Steps

10. Download the Utility:

- Visit the official website or MetaTrader 5 Market to download the utility file (e.g., Eezeorder .ex5).
- If you got the utility file via email from the developer, then you need to download the file to your PC

11. Copy the Utility to MetaTrader 5:

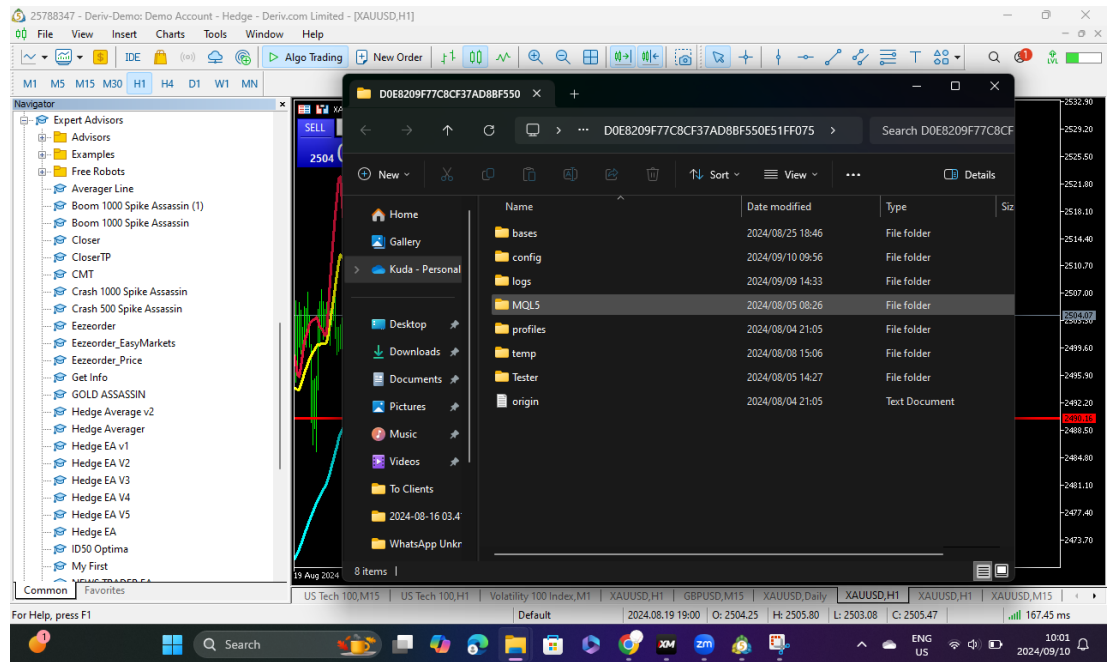
- Open MetaTrader 5.
- Go to where it says “File” (shown)



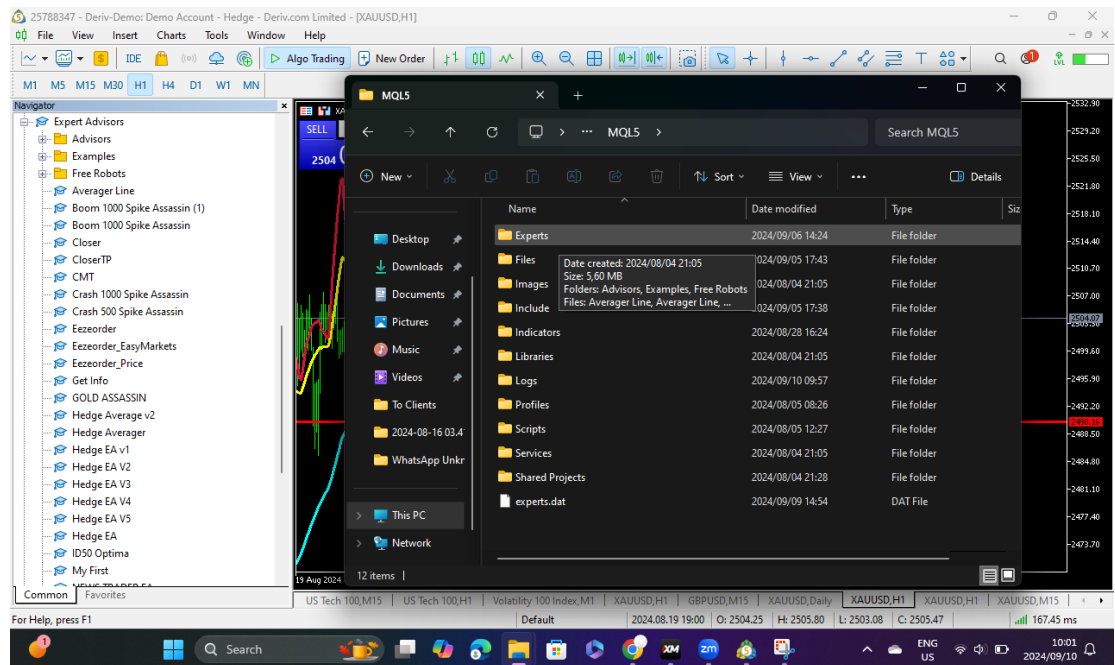
- then > “Open Data Folder”.(Shown)



- Navigate to “MQL5” (Shown)



- > “Experts” and (show)



- paste the .ex5 file.

12. Restart MetaTrader 5:

- Close and reopen the platform to load the new utility.

13. Add the Utility to a Chart:

- Open a chart for the desired currency pair.

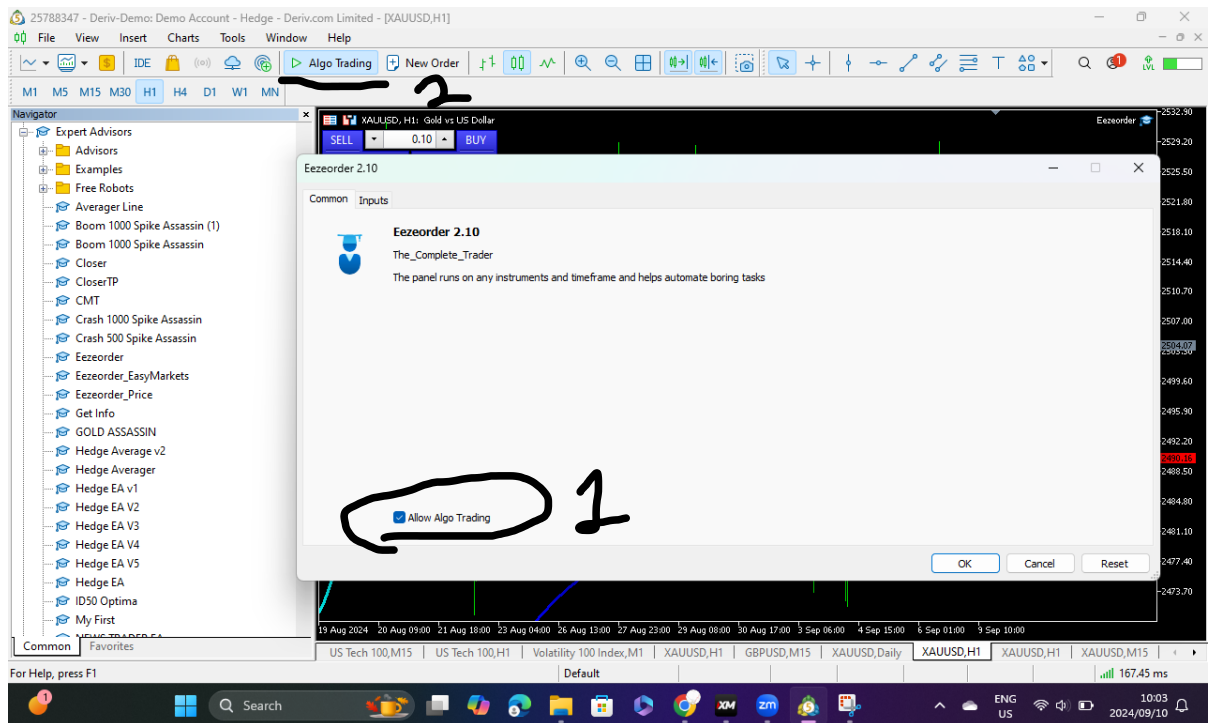
- Go to Navigator > Experts Advisors and drag the utility onto the chart.(Show)

3. Configuration

General Settings

As soon as you place the utility on the screen, make sure the following:

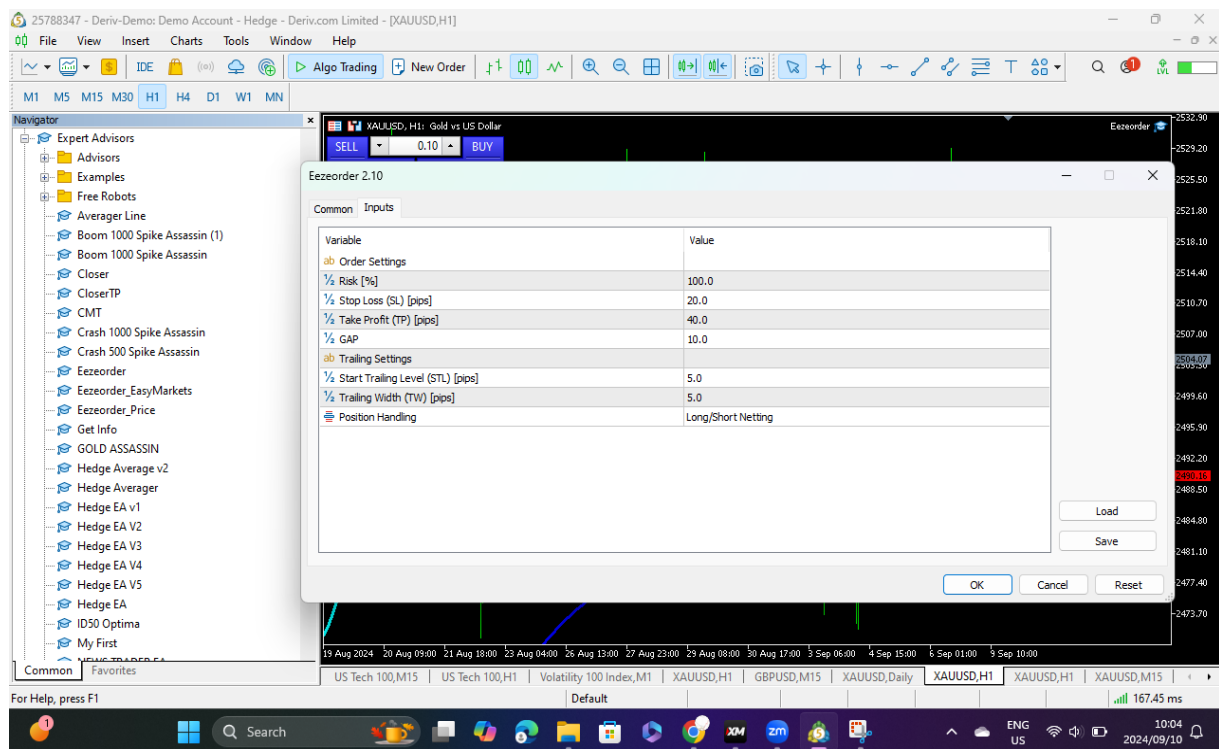
- The algo trading is turned on under “Common” settings (Diagram)



- Also Make sure “Allow Algo Trading” is on in your meta Trader and looks green as the one above (SO BOTH ALGO TARDINGS SHOULD BE ON)
- Click Ok
- If you are using it for MT4, then also click on allow DLL.

Input Parameters

Input parameters that can be customized.



Parameter	Description	Default Value
RiskPercentage	Percentage of account balance to risk (if max lots button is pressed).	100%
Stop Loss	This is just an initialization figure it doesn't matter yet.	
Take Profit	This is just an initialization figure it doesn't matter yet.	
GAP	It is the distance between a pending order and current price(Pip version)	
Start Trailing	When do you want your stop loss to start to be a trailing stop loss	5 pips in profit
Trailing Width	What distance do you want your stop loss to trail the current price	5 pips

Advanced Settings

There are not any “Advanced” settings so to say as this tool is there to simplify your life.

YOU SHOULD HOWEVER NOTE THE FOLLOWING, once you click OK and the EA has been attached to the chart, make sure:

- **Algorithm Selection:** If you want to have your trades with SL/ TP or Trailing Stop, use the Checkbox. Make sure it is “ticked”
- **If you do not want to use Price but Pips for TP and SL:** Contact thecompletetrader@consultant.com I will give you that version provided you give proof that you bought the copy you are using.

4. Features

Core Features

- **Automated Trading (Multiple Trades Opener):** Execute trades automatically based on predefined inputs.
- **Automated Trading (Multiple Trades Handler)** Implement stop-loss adjustment (Trailing Stop) and multiple closing.

Additional Features

- **Max Lots:** Shows you the maximum lot size you can use.
- **Summaries :** Displays how many trades are open and running(S/L) plus Break Even Point.
- **Draggable Interface:** Can be moved around screen.

5. Operation

Starting the Utility

14. Launch MetaTrader 5:

- Ensure the platform is running and connected to your trading account.

15. Attach the Utility to a Chart:

- Select a chart and add the utility by dragging it from the Navigator panel.

16. Configure Settings:

- Adjust the input parameters as needed for your trading strategy.

17. Enable Auto Trading:

- Click the Auto/Algo Trading button on the toolbar to activate the utility.

Monitoring and Managing Trades

- **Dashboard Overview:**
 - Access the utility's dashboard to monitor open trades, account balance, and performance metrics.
- **Manual Intervention:**
 - Pause or start trading manually if you no longer want to use.

6. Best Practices

Risk Management

- Always set a stop-loss level to minimize potential losses.
- Use appropriate lot sizes based on your account balance and risk tolerance.

Strategy Optimization

- Regularly review and optimize your trading strategy using backtesting and forward testing.
- Keep an eye on market news and economic indicators that might affect trade acceptance on the server.

Continuous Monitoring

- Open the "Journal" Section of the "Toolbox" or "Terminal" to Monitor the utility's performance or see if there is any error showing.
- Update the utility and MetaTrader 4/ 5 platform to the latest versions for optimal performance.

7. Troubleshooting

Common Issues

Issue	Solution
Utility not appearing on the chart	Ensure the file is in the correct Experts folder and restart MetaTrader 5.

Unexpected errors or crashes

Check the Journal tab for error messages and consult support.

Auto Trading not executing

1. Verify that AutoTrading is enabled and parameters are correctly set.
2. Check if your broker allows algo trading(EAs)
3. If the error says “Unsupported Filling Mode” it means your broker uses a different filling mode for that particular pair(therefore you may need to contact the developer on thecompletetrader@consultant.com) so they can adjust the EA to your broker settings .

Error Logs

- Access error logs in the Experts and Journal tabs for detailed information on any issues encountered.
- Contact support with log details for further assistance.

8. FAQs

Frequently Asked Questions

Q: Can I use the utility on multiple charts simultaneously?

A: Yes, the utility can be attached to multiple charts, but ensure that each instance is configured correctly.

Q: Is the utility compatible with MetaTrader 4?

A: The MT4 has its own utility is designed exclusively for MetaTrader 4 and is not compatible with MetaTrader 5. While MT5 has its own utility is designed exclusively for MetaTrader 5 and is not compatible with MetaTrader 4

Q: How do I update the utility?

A: Download the latest version from the official website (Or contact thecompletetrader@consultant.com) and replace the existing file in the Experts folder.

9. Contact & Support

Support Information

- **Email:** thecompletetrader@consultant.com
- **Phone:** +27 62 685-4517
- **Website:** https://www.mql5.com/en/users/the_complete_trader_pro/seller